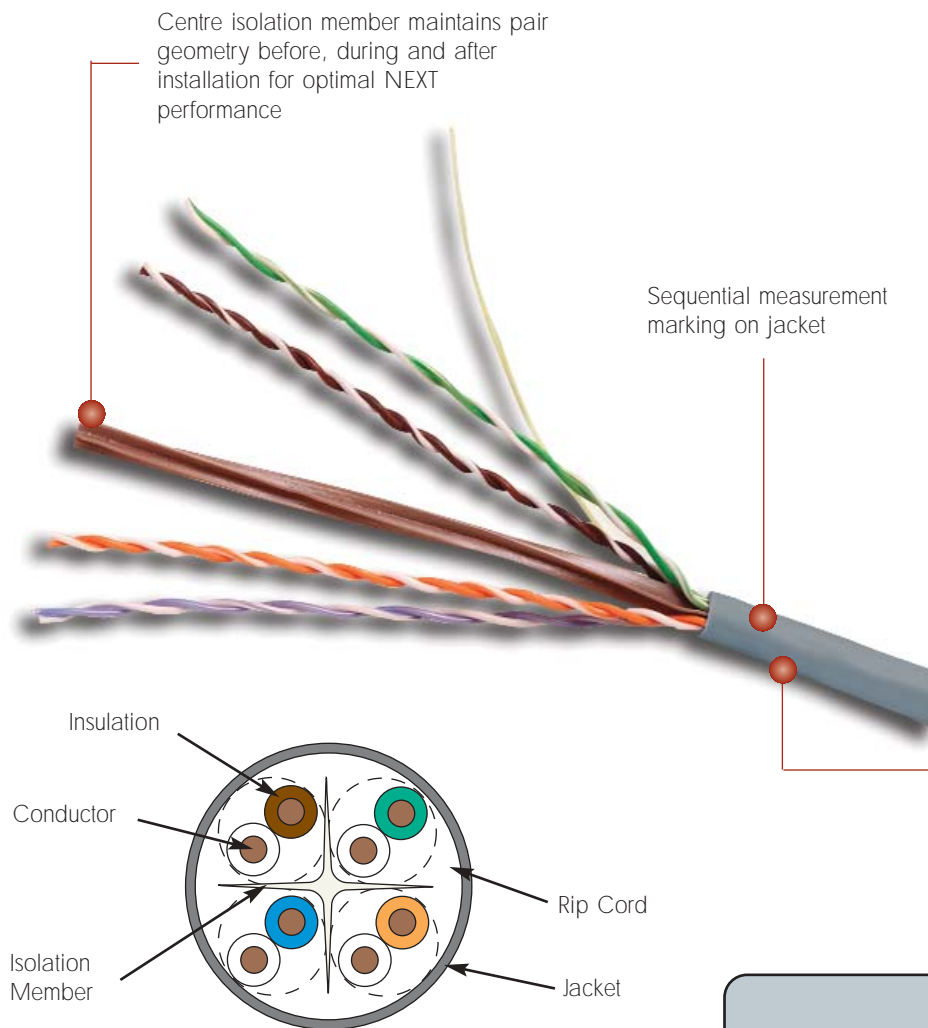


10G 6™ CABLE

Siemon 10G 6 cable provides industry leading category 6/class E transmission performance. When combined with our 10G 6 series connectivity, the result is a channel capable of delivering usable bandwidth to 625 MHz, in support of 10 Gigabit application. Choose 10G 6 for the ultimate in full duplex high-speed data and streaming multimedia applications support.



CABLE



Cable Construction

- UTP
- 0.57mm (0.023 in.) (23 AWG) solid bare copper
- 6.35mm (0.25 in.) max jacket diameter
- Round jacket
- Centre isolation member

LSOH, CMX, CMR and CMP jacket options available

Compliance

- ISO/IEC 11801:2002 2nd Edition (Category 6)
- ANSI/TIA/EIA-568-B.2-1
- IEC 61156-5 1st Edition
- LSOH:IEC 332: Part 1, IEC 754, and IEC 1034
- UL CMX
- UL CMR and CSA FT4
- UL CMP and CSA FT6

Cable packaged in a reel-in-a-box (305m) to protect product during shipping and facilitate tangle-free installation

PRODUCT INFORMATION

CABLE

TRANSMISSION PERFORMANCE

TIA/EIA & ISO/IEC

SIEMON WORST CASE

Frequency (MHz)	Maximum Insertion Loss (dB/100m)		Minimum NEXT (dB/100m)		Minimum PS NEXT (dB/100m)		Minimum ELFEXT (dB/100m)		Minimum PS ELFEXT (dB/100m)		Minimum Return Loss (dB/100m)		Maximum Propagation Delay (ns/100m)		Maximum Delay Skew	
	20	30	74.3	81.3	72.3	79.3	67.8	73.8	64.8	70.8	20.0	20.0	570	550	45.0	35.0
4.0	3.8	3.6	65.3	72.3	63.3	70.3	55.8	61.7	52.8	58.7	23.0	23.6	552	532	45.0	35.0
10.0	6.0	5.7	59.3	66.3	57.3	64.3	47.8	53.8	44.8	50.8	25.0	26.0	545	525	45.0	35.0
16.0	7.6	7.2	56.2	63.2	54.2	61.2	43.7	49.7	40.7	46.7	25.0	26.0	543	523	45.0	35.0
20.0	8.5	8.8	54.8	61.8	52.8	59.8	41.8	47.7	38.8	44.7	25.0	26.0	542	522	45.0	35.0
31.25	10.7	10.0	51.9	58.9	49.9	56.9	37.9	43.9	34.9	40.9	23.6	24.6	540	520	45.0	35.0
62.5	15.4	14.3	47.4	54.4	45.4	52.4	31.9	37.8	28.9	34.8	21.5	22.5	539	519	45.0	35.0
100.0	19.8	18.3	44.3	51.3	42.3	49.3	27.8	33.8	24.8	30.8	20.1	21.1	538	518	45.0	35.0
160.0	25.6	23.5	41.2	48.2	39.2	46.2	23.7	29.7	20.7	26.7	18.7	19.7	537	517	45.0	35.0
200.0	29.0	26.4	39.8	46.8	37.8	44.8	21.8	27.7	18.8	24.7	18.0	19.0	537	517	45.0	35.0
250.0	32.8	29.8	38.3	45.3	36.3	43.3	19.8	25.8	16.8	22.8	17.3	18.3	536	516	45.0	35.0
300.0	36.4	32.8	37.1	44.1	35.1	42.1	18.3	24.2	15.3	21.2	16.8	17.8	536	516	45.0	35.0
350.0	39.8	35.7	36.1	43.1	34.1	41.1	16.9	22.9	13.9	19.9	16.3	17.3	536	516	45.0	35.0
400.0	43.0	38.4	35.3	42.3	33.3	40.3	15.8	21.7	12.8	18.7	15.9	16.9	536	516	45.0	35.0
550.0	51.8	45.8	33.2	40.2	31.2	38.2	13.0	18.9	10.0	15.9	14.9	15.9	536	516	45.0	35.0
Typical Performance 1-550 MHz	7% under worst case		5 dB over worst case		7 dB over worst case		10 dB over worst case		10 dB over worst case		1.8 dB over worst case		20 ns better than worst case		5 ns better than worst case	

All performance based on 100 meters

ELECTRICAL CHARACTERISTICS

Maximum DC Resistance (@ 20° C)	9.4 ohms/100m
Characteristic Impedance (no impedance averaging allowed)	1-100 MHz: 100 ohms ± 15% 100-250 MHz: 100 ohms ± 22%
Nominal Velocity of Propagation (NVP)	0.65

10G 6™ 4-Pair Solid UTP Cable:

- 9C6R4-E5PVC (CMR, CSA FT4), Blue Jacket, 305m (1000 ft.) box
- 9C6P4-E5Plenum (CMP, CSA FT6), Blue Jacket, 305m (1000 ft.) box
- 9C6X4-E5PVC (CMX, IEC 332.1), Gray Jacket, 305m (1000 ft.) box
- 9C6L4-E5LSOH (IEC 332.1), Violet Jacket, 305m (1000 ft.) box

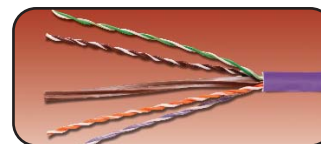
Other cable lengths also available: Add "-5CR" for 500m (1640 ft.) reel, "-1KR" for 1000m (3,281 ft.) reel
Contact your local sales representative for cable availability and delivery lead time



9C6R4-E5/9C6P4-E5



9C6X4-E5



9C6L4-E5

Because we are continuously improving our products, The Siemon Company reserves the right to change specifications and availability without prior notice.
MAX®, MC® and 10G 6™ are trademarks of The Siemon Company

For related product information request Spec Sheet(s):
10G 6 MAX® Modules (PROD-SS-MX6U)
10G 6 MC® Modular Patch Cords (PROD-SS-MC6U)

The Americas
Watertown, CT USA
Phone (1) 860 945 4200

Europe/Middle East/Africa
Surrey, England
Phone (44) 0 1483 480040

Asia/Pacific
Shanghai, P.R. China
Phone (86) 21 6390 6778

WWW.SIEMON.COM

