

# 10G 6™ MAX® MODULES

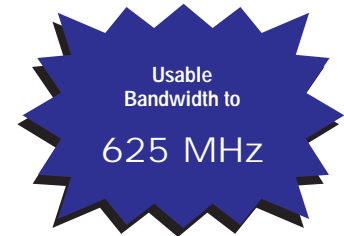
Part of Siemon's new 10G ip™ Cabling Solution, 10G 6™ MAX modules exceed all category 6 component requirements, and also provide usable bandwidth to 625 MHz. This superior level of performance is achieved via an enhanced circuit board design, optimization of jack pin geometry, and stringent inspection and quality control procedures. The end result is the best performing UTP outlet available.

Combine the 10G 6 MAX jack with Siemon's new 10G 6 MC® patch cords and 10G 6 HD® patch panels for a complete 10G 6 channel solution. This superior 10G 6 cabling system delivers unparalleled network performance today and support for multi-gigabit Ethernet applications expected in the future.

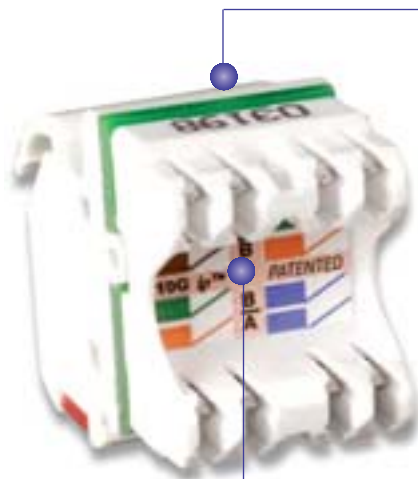
In addition to superior performance, these outlets feature a variety of user and installer benefits. Its compact design allows up to six modules to fit into a single gang faceplate (twelve in a double gang) for maximum work area density. The angled version provides a gravity fed, low-profile design that improves modular cord management and protection at the work area.



PATENTED



WORK AREA



T568A and T568B wiring compatible



Backward compatible with category 6/class E and lower patch cords

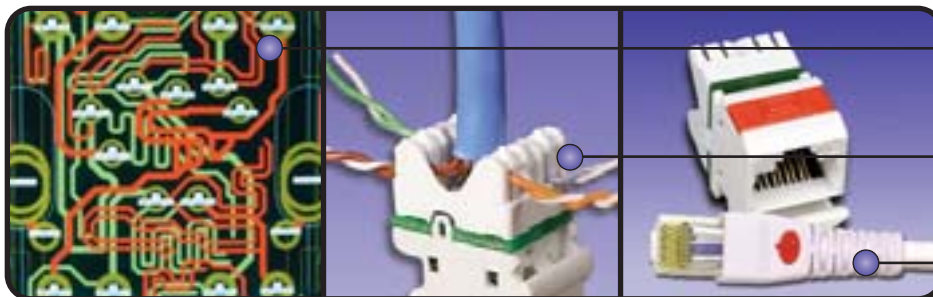
Install from either front or rear of faceplate

Side-stackable for maximum density

Terminates with standard 110 termination tools

Icons provided for port identification

Protective doors (not shown) minimize exposure to dust and other contaminants



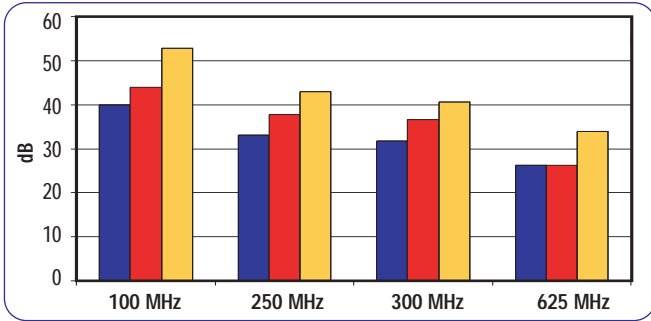
*Circuit board is tuned and balanced using our patent-pending phase-delay technology to maximize margin to category 6 and beyond*

*Pyramid wire entry system on S310® blocks separates paired conductors when lacing cables to simplify and reduce installation time*

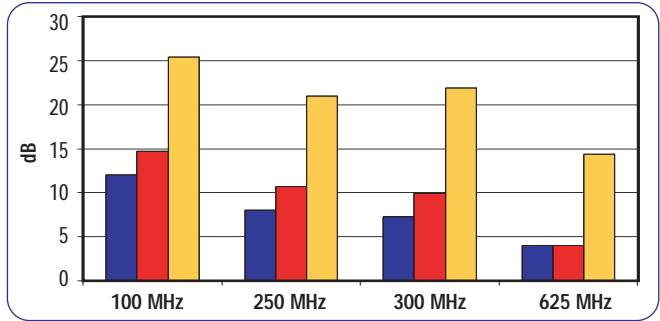
*For superior performance use 10G 6 MC modular cords to unlock the performance of 10G 6 MAX modules*

## 4 Connector Channel Performance Data for 10G 6 UTP Solution\*

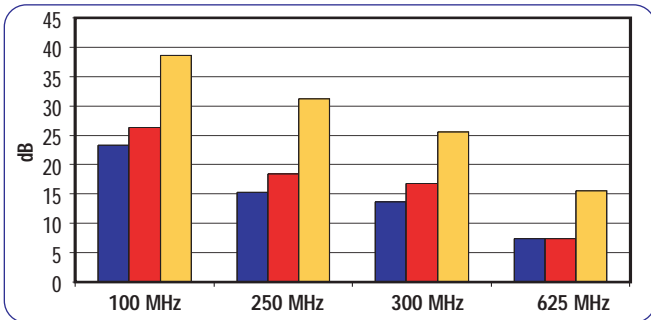
### NEXT



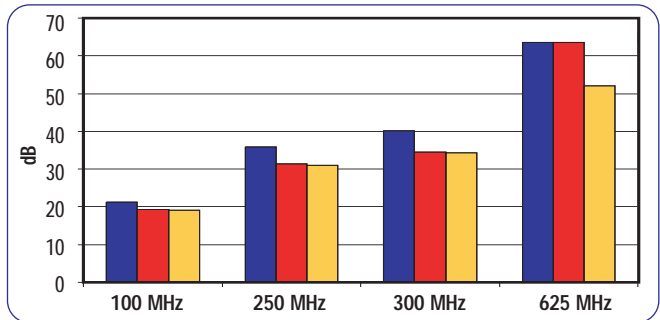
### Return Loss



### ELFEXT



### Insertion Loss



■ Limit †   
 ■ Worst Case   
 ■ Typical

† Performance from 250-625 MHz based on extrapolated TIA/EIA and ISO/IEC limits

### 10G 6™ MAX® Modules:

- 10GMX-(XX).....Angled module with T568A/B wiring, rear strain relief cap and protective rubber door
- 10GMX-F(XX).....Flat module with T568A/B wiring and rear strain relief cap
- 10GMX-K(XX).....Keystone module with T568A/B wiring and rear strain relief cap



10GMX

10GMX-F

10GMX-K

Because we are continuously improving our products, The Siemon Company reserves the right to change specifications and availability without prior notice.

10G 6™, 10 G ip™, HD®, MC®, MAX®, Pyramid™, S210® and S310® are trademarks of The Siemon Company

\*4 Connector Channel Performance Data utilizes 10G 6 HD Patch Panel, 10G 6 MAX UTP Modules and 10G 6 MC UTP Modular Cords

Use (XX) to specify color:

01 = black, 02 = white, 03 = red, 04 = gray, 05 = yellow, 06 = blue, 09 = orange, 20 = ivory, 25 = bright white, 80 = light ivory, 82 = alpine white

Add "-D" for color-matching door for flat version

ⓑ Add "B" to end of part number for bulk project pack of 100 modules  
Angled and flat modules include one color-matching, one red, and one blue icon

Door color is clear for angled red, yellow, blue and orange modules, white for flat

Note: Keystone version is designed for integration with various international mounting products and is not compatible with MAX mounting hardware

### For additional resource information:

Visit our web site at [www.siemon.com](http://www.siemon.com)

### For related product information request Spec Sheet(s):

- 10G 6 HD Patch Panels (PROD-SS-HD10G)
- 10G 6 MC Patch Cords (PROD-SS-MC10G6)
- S210® Wiring Block (PROD-SS-210)

**The Americas**  
Watertown, CT USA  
Phone (1) 860 945 4200

**Europe/Middle East/Africa**  
Surrey, England  
Phone (44) 0 1483 480040

**Asia Pacific**  
Shanghai, P.R. China  
Phone (86) 21 6390 6778