

# 10G 6™ MC® MODULAR CORDS

Siemon takes patch cord performance to the next level with our new 10G 6 MC modular patch cords. Part of Siemon's 10G ip™ Cabling Solutions, these next generation cords exceed all category 6 component requirements and provide usable bandwidth to 625 MHz. Each cord is transmission tested using test methodology specified by TIA/EIA of category 6 requirements.

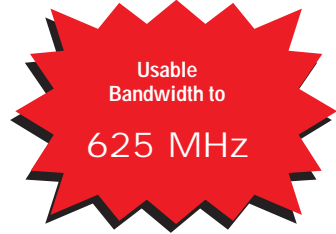
A variety of plug and cable enhancements contribute to the cord's ground-breaking performance - including a patented cross-pair isolator, extended frequency cable and an innovative 360° crimp which provides excellent plug-to-cable strain relief without causing pair deformation.

Combine the 10G 6 MC modular cord with Siemon's new 10G 6 MAX® modules and 10G 6 HD® patch panels for a complete 10G 6 channel solution. This superior 10G 6 cabling system delivers unparalleled network performance today and supports emerging Internet Protocol (IP) like Voice Over IP (VoIP), IP video and future multi-gigabit applications.

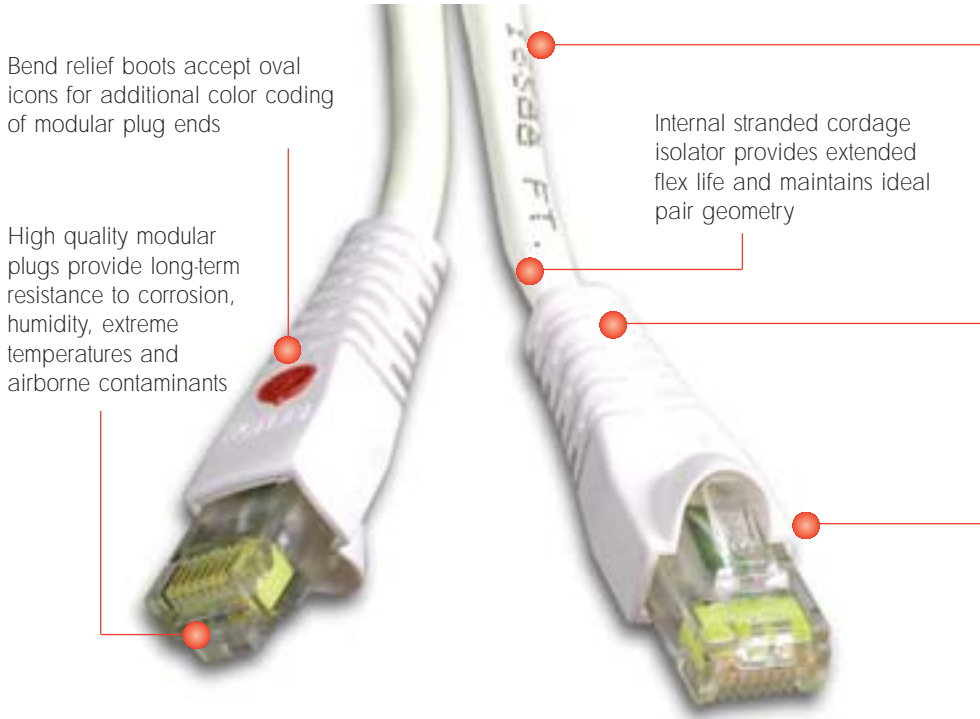


10G ip™

PATENTED



PATCH CORDS, PLUGS & CABLE



Bend relief boots accept oval icons for additional color coding of modular plug ends

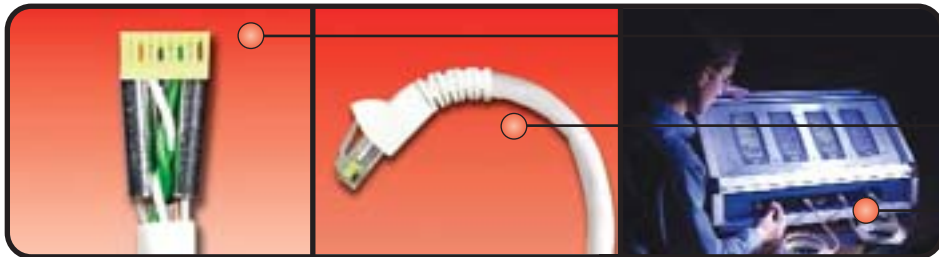
High quality modular plugs provide long-term resistance to corrosion, humidity, extreme temperatures and airborne contaminants

Internal stranded cordage isolator provides extended flex life and maintains ideal pair geometry

10G 6 stranded cordage far exceeds category 6 performance specifications

360 degree crimp provides excellent plug-to-cable strain relief without causing pair deformation

Slide on boots feature a latch guard to protect plug from snagging when pulling through pathways or cable managers



Patented metallic isolator shields pairs inside plug for optimum NEXT performance

37 mm (1.4 in.) boot ensures excellent bend relief, critical for category 6 performance

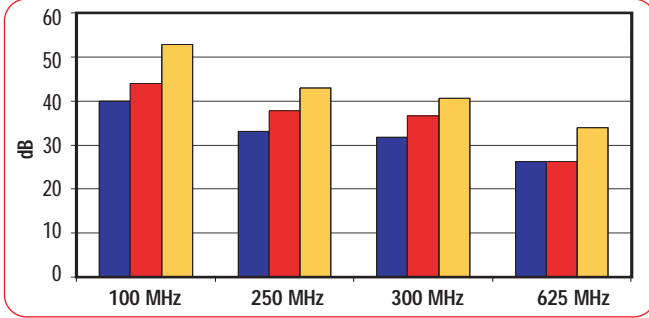
100% transmission testing ensures margin well beyond category 6 modular cord specifications and guarantees optimum field performance

# PRODUCT INFORMATION

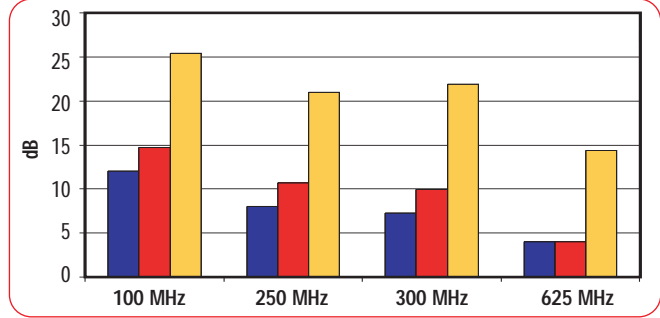
PATCH CORDS, PLUGS & CABLE

## 4 Connector Channel Performance Data for 10G 6 UTP Solution\*

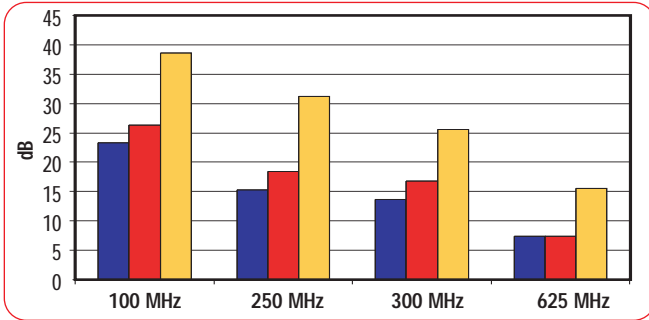
### NEXT



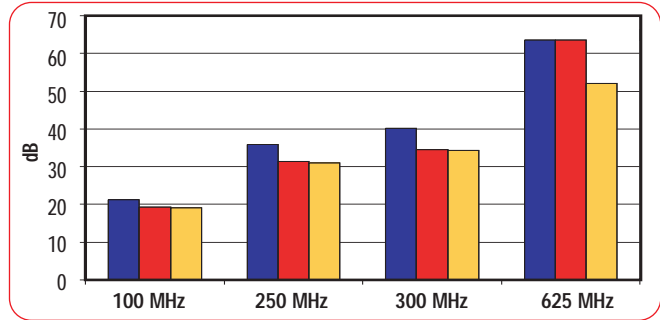
### Return Loss



### ELFEXT



### Insertion Loss



■ Limit †   
 ■ Worst Case   
 ■ Typical

† Performance from 250-625 MHz based on extrapolated TIA/EIA and ISO/IEC limits

\*4 Connector Channel Performance Data utilizes 10G 6 HD Patch Panel, 10G 6 MAX UTP Modules and 10G 6 MC UTP Modular Cords

### 10G 6 MC® Modular Cords:

10GMC-(XX)-(XX) ..... 10G 6 MC, double-ended, 4-pair stranded modular cord, T568A/B, color matching jacket/boot

Use 1st (XX) to specify cord length:

03 = 0.9m (3 ft.), 05 = 1.5m (5 ft.), 07 = 2.1m (7 ft.),  
10 = 3.1m (10 ft.), 15 = 4.6m (15 ft.), 20 = 6.1m (20 ft.)

Use 2nd (XX) to specify color:

01 = black, 02 = white, 03 = red, 04 = gray, 05 = yellow,  
06 = blue, 07 = green

Ⓢ Add "B" for bulk project pack of 100 modular cords



Because we are continuously improving our products, The Siemon Company reserves the right to change specifications and availability without prior notice.

10G 6™, 10 G ip™, HD®, MC®, MAX® and S210® are trademarks of The Siemon Company

### For additional resource information:

Visit our web site at [www.siemon.com](http://www.siemon.com)

### For related product information request Spec Sheet(s):

10G 6 HD® Patch Panels (PROD-SS-HD10G6)

10G 6 MAX® Modules (PROD-SS-MX10G6)

S210® Wiring Block (PROD-SS-210)

**The Americas**  
Watertown, CT USA  
Phone (1) 860 945 4200

**Europe/Middle East/Africa**  
Surrey, England  
Phone (44) 0 1483 480040

**Asia Pacific**  
Shanghai, P.R. China  
Phone (86) 21 6390 6778

WWW.SIEMON.COM

**ISO 9001**  
CERTIFIED

**ISO 14001**  
CERTIFIED

