

CATEGORY 6 CROSS-CONNECT WIRE

Siemon's Category 6 cross-connect wire is ideal for category 6 or category 5e cross-connect applications using S210® or S110® blocks. Channel performance exceeds category 6 out to 250 MHz.



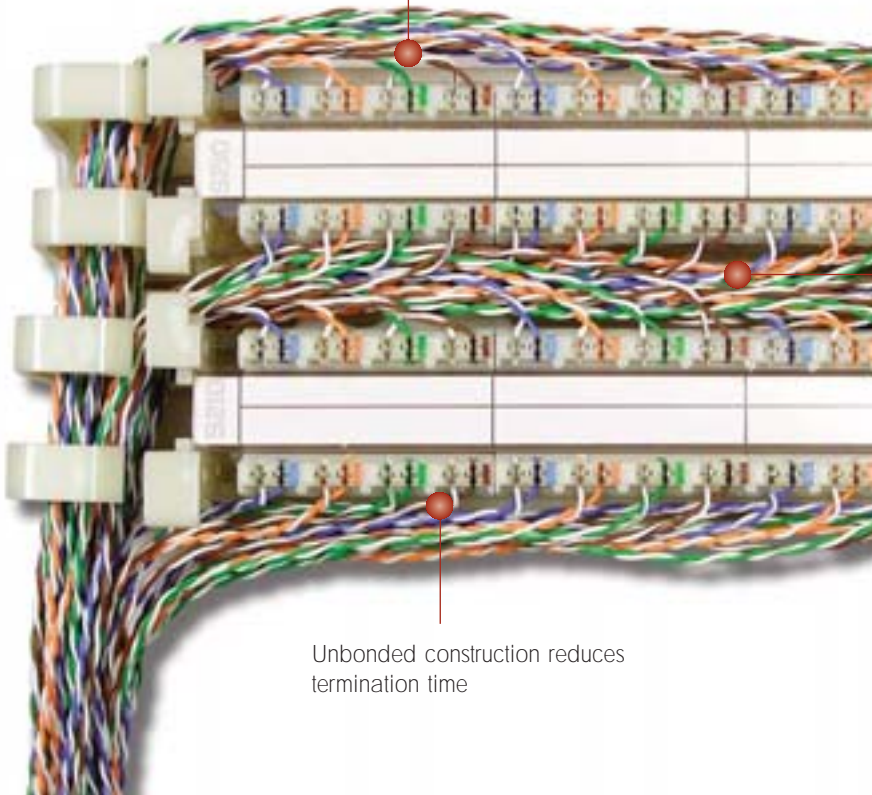
CABLE

Exceeds category 6 channel requirements when used with Siemon S210 blocks

Cable Construction

- 0.5mm (0.02 in.) (24 AWG) bare copper conductors
- 1.02mm (0.04 in.) insulation diameter (nominal)

Maximum cross-connect length of 5m (16 ft.) allowed for category 6 installations



Unbonded construction reduces termination time

	<p>Compliance</p> <ul style="list-style-type: none">• ISO/IEC 11801:2002 2nd Edition (Class E)• TIA/EIA-568-B.2-1	
--	---	--

Siemon's cross-connect wire dispenser is designed to mount to standard EIA 19 in. (482.6mm) racks to facilitate quick and easy installation of cross-connect wire

Available in 305m (1,000 ft.) spools

PRODUCT INFORMATION

CABLE

TRANSMISSION PERFORMANCE

TIA/EIA & ISO/IEC SIEMON WORST CASE

Frequency (MHz)	Maximum Insertion Loss (dB/100m)		Minimum ELFEXT (dB/100m)		Minimum PS ELFEXT (dB/100m)		Minimum Return Loss (dB/100m)	
1.0	2.0	2.0	67.8	67.8	64.8	64.8	20.0	20.0
2.0	2.7	2.7	61.8	61.8	58.8	58.8	21.5	21.5
4.0	3.8	3.8	55.8	55.8	52.8	52.8	23.0	23.0
10.0	6.0	6.0	47.8	47.8	44.8	44.8	25.0	25.0
16.0	7.6	7.6	43.7	43.7	40.7	40.7	25.0	25.0
20.0	8.5	8.5	41.8	41.8	38.8	38.8	25.0	25.0
31.25	10.7	10.7	37.9	37.9	34.9	34.9	23.6	23.6
62.5	15.4	15.4	31.9	31.9	28.9	28.9	21.5	21.5
100.0	19.8	19.8	27.8	27.8	24.8	24.8	20.1	20.1
125.0	22.4	22.4	25.9	25.9	22.9	22.9	19.4	19.4
160.0	25.6	25.1	23.7	23.7	20.7	20.7	18.7	18.7
175.0	26.9	29.9	22.9	22.9	19.9	19.9	18.4	18.4
200.0	29.0	29.0	21.8	21.8	18.8	18.8	18.0	18.0
250.0	32.8	32.8	19.8	19.8	16.8	16.8	17.3	17.3

All performance based on 100 meters

ELECTRICAL CHARACTERISTICS

Maximum DC Resistance (@ 20° C)	9.4 ohms/100m
Characteristic Impedance (no impedance averaging allowed)	1-100 MHz: 100 ohms ± 15% 100-250 MHz: 100 ohms ± 22%
Nominal Velocity of Propagation (NVP)	0.65

Category 6 Cross-Connect Wire:

CJ6-W4-1000 4-pair, 24 AWG (0.5mm), category 6 cross-connect wire, pair colors blue/orange/green/brown, 305m (1,000 ft.) spool

Cross-Connect Wire Dispenser:

CWD-19 19 in. (482.6mm) cross-connect wire dispenser

Because we are continuously improving our products, The Siemon Company reserves the right to change specifications and availability without prior notice. S210® and S110® are trademarks of The Siemon Company

For related product information request Spec Sheet(s):
S210® Wiring Block (PROD-SS-210)
S110® Wiring Block (PROD-SS-110)

The Americas
Watertown, CT USA
Phone (1) 860 945 4200

Europe/Middle East/Africa
Surrey, England
Phone (44) 0 1483 480040

Asia/Pacific
Shanghai, P.R. China
Phone (86) 21 6390 6778

WWW.SIEMON.COM

